



# Newsletter

## Message from the Chief Executive

**The Barrow Cadbury Trust is an independent, charitable foundation, committed to supporting vulnerable and marginalised people in society.**

**The Trust provides grants to grassroots voluntary and community groups working in deprived communities in the UK, with a focus on the West Midlands. It also works with researchers, think tanks and government, often in partnership with other grant-makers, seeking to overcome the structural barriers to a more just and equal society.**



The last six months have seen enormous challenges unfolding across Europe. While not in as poor a shape as some others, our economy continues to falter and our young people are experiencing not only very high unemployment rates but the very real prospect of being permanently less well off than their parents' generation. Cuts to statutory sector provision are really beginning to bite and we know this will continue to worsen for some time to come. Local authorities are cutting vital provision to vulnerable people in ways which we (and they) know will have far-reaching consequences and incur higher costs in the future. As the state is cut back, women's lives in particular become more difficult. The list of things which are difficult and challenging is a long and sobering one. All of our lives are touched to a greater or lesser extent.

So in our newsletter we have consciously brought you some good news stories. Some highlights for us over the past few months, and which give us hope are:

- The sentencing process for young adults in the UK now recognizes the concept of 'maturity' as a factor for the first time; this has been a key aim of the T2A Alliance and is a concretely successful outcome.
- The Changing Minds funding collaborative has successfully established 'British Future' as an independent organisation which aims to deepen and inform the public debate about identity, migration, integration and fairness.
- We have launched a new grants programme to support small-scale sustainable local action with seed funds in the West Midlands (<http://www.bctrust.org.uk/?p=1500>).
- Our Board has agreed that up to 5% of the Trust's endowment can be used for programme-related investment and the Charity Commission has issued guidance helpfully clarifying how charities can engage in 'social investment' i.e. investment for a social as well as financial return.
- The Trust continues to spend more than its income at the current time because we know how tough it is for so many communities and organisations.
- Members of the 'Habits of Solidarity' network supported by the Trust spent two days in Belfast to meet with community organisations and share learning about approaches to building cohesion.
- In keeping with our Quaker roots, the Trust is supporting an initiative to commemorate the Friends Ambulance Unit and Friends Relief Service peaceable contributions during times of conflict. A memorial is to be built at the National Arboretum at Lichfield. We will feature this project in a later newsletter.

Seasonal greetings to all and remember these words of the philosopher, Karl Popper: *OPTIMISM IS A MORAL DUTY!*

Sara Llewellyn Dec 2011

## Features

- IVAR Report
- "Small Change" funding initiative
- Social and Ethical Investment
- Barrow Cadbury Trust at the 2011 Party Conferences

## Programmes



Criminal Justice



Migration and Europe



Poverty and Inclusion

# IVAR Report on 'Funding Plus' in the UK

In September, **The Institute for Voluntary Action Research (IVAR)** launched a new report: *Beyond money: A study of funding plus in the UK*, the final report of research funded by Barrow Cadbury Trust, The Diana, Princess of Wales Memorial Fund and Trust for London.

The report examines different approaches to funding plus used by UK charitable foundations, identifying the principal benefits, challenges and risks of these approaches in order to generate practically useful learning about funding plus. The report usefully makes a distinction between work seeking to strengthen the organisations we fund in order to increase their effectiveness and work advocating for policy change in our chosen fields. Both are valid approaches, but each raise a different set of practice issues for thoughtful funders to consider.

The research found that the funding plus field comprises a broad range of definitions, purposes and activity. Within this IVAR were able to identify five overarching preconditions for success in funding plus:



- Strong personal relationships;
- Good knowledge of grantees and the sector in which they operate;
- Grantees that are ready and willing for an engaged relationship with a funder;
- Bespoke rather than standardised or prescriptive approaches;
- Careful and responsible management of power relationships between funder and grantee.

In the Foreword (co-signed by Sara Llewellyn, Sioned Churchill, Trust for London, and Andrew Cooper The Diana, Princess of Wales Memorial Fund), the report's funders noted that:

*"Our purpose in commissioning this study was to put together a smorgasbord of approaches that funders are currently taking to adding value to their work. We wanted to compare and contrast, to illuminate the ethical and practical dilemmas emerging from a variety of experimental work. We specifically did not want to imply 'grants good, funding plus better' and we very much hope it will not be seen as such. Rather, we wanted to explore whether and when funding plus can be better, and whether and when it should be eschewed.*

*We all need to make best use of all of our resources, money being only one of them (albeit usually the greatest). We rather take issue with the authors' statement that our principal raison d'être is to make grants. We do not think it is. Our raison d'être is to achieve mission impact as charities in our own right. Money is just the major means we use to pursue that mission. Indeed, some of our work could be described as not 'funding plus' but 'plus funding', where we work on issues with partners and the money just makes the work possible".*

The full report can be downloaded here:

**<http://www.ivar.org.uk/publications/reports-and-publications/beyond-money-study-funding-plus-uk>**



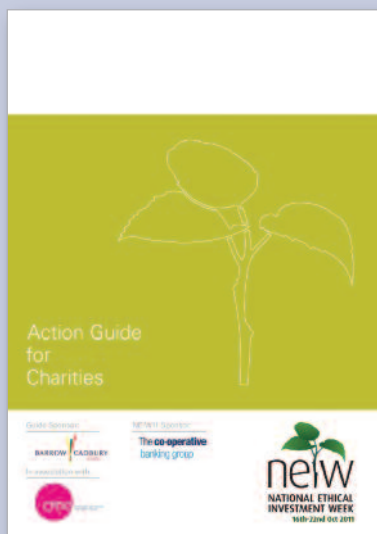
## "Small Change" funding initiative launched

The Barrow Cadbury Trust has launched a new small grants initiative, aimed at catalysing mutual aid among local communities in Birmingham and the Black Country. Targeted at small community groups, the Trust will provide grants of up to £3,000 to support initiatives that will help local people help each other. Funding could kick start projects such as Timebanks, food co-ops or community gardening schemes.

The key criterion is that, once the initial grant is ended, projects are not dependent on further grant funding from the Trust or elsewhere, but sustain themselves through voluntary effort or social enterprise. This is a fund designed to give local projects a timely boost or the tools they need to do the job. For more details, go to the Barrow Cadbury Trust's Poverty and Inclusion Programme webpage [http://www.bctrust.org.uk/?page\\_id=691](http://www.bctrust.org.uk/?page_id=691).

**If you are running any community projects,** you might be interested to know about the **'Your Square Mile mutual'**, a mutual created by citizens for citizens, open to everyone aged 16 or over in the UK. The first of its kind, membership costs £10.00 and members have benefits including £1m of Public Liability Insurance and £25,000 of Personal Accident Insurance to cover any kind of volunteering, a free legal services helpline and 20% off printing to help you promote local activity in your community. The Your Square Mile Mutual is also negotiating new deals including faster and more affordable CRB checks especially for smaller, local charities, a loyalty card for discounts at local shops in partnership with the Big Issue and cheaper street party insurance for the 2012 Jubilee and Olympics parties. More details, including news about additional deals, are available on the website <http://yoursquaremile.co.uk/ysm-home/the-mutual/members-offers/>

# Social and ethical investment



One of the Trust's aims is to stimulate and nurture the growing interest in social investment – the move away from an exclusive focus on traditional stocks and shares, towards investment in companies that aim for a positive social impact as well as a financial return – currently being pioneered by funders and other investors. In pursuit of this goal, the Trust has made a number of grants that will either help increase opportunities for social investment or assist newcomers to move their assets into this arena. In September, Barrow Cadbury's trustees agreed that up to 5% of the Trust's endowment could be devoted to social and mission-related investment.

Three grants have been made to date that will help develop this area of work. The first was the sponsorship of an **Action Guide for Charities**, which

offers practical tips to help charities ensure their savings and investments best support their mission. It explores some of the latest thinking in the field, including the growth of social impact investing. The guide was launched as part of National Ethical Investment Week, a week of action aiming to increase awareness of and support for investments that have a positive action on society and the environment. For more information about NEIW and ethical investment, visit [http://www.neiw.org/charities\\_guide](http://www.neiw.org/charities_guide)

The second grant was awarded for the start-up phase of a new organisation, **Ethex**. Ethex is an online site that aims to make ethical investment easier and more widely available, without the need for expensive intermediaries. It seeks to bring together individuals and organisations interested in social investment with social businesses that are ready to receive investments. The Trust's grant contributed to the establishment of Ethex' website, and the organisation is now looking to the second stage of its development.

The third grant has enabled Social Finance to undertake a feasibility study to assess whether a Birmingham-based wellbeing project '**Be Active**' could be funded through a Social Impact Bond (SIB). SIBs are a way of enabling organisations to enter into payment by results contracts without taking on the financial risk of only being paid if the interventions are successful. Under a SIB, third party investors (at present

mainly Trusts and Foundations and a few private investors) pay the provider organisation in advance. If the intervention is successful, the Government pays a dividend to the investors.

Be Active is a large-scale Birmingham programme which provides free access to a network of leisure centres and fitness activities across the city. It appears to be very successful in improving health and increasing community cohesion, but in order to be funded through a SIB, its benefits would need to be quantified and translated into measurable (cash) savings. The feasibility study will test whether this is possible, and assess the viability of the SIB model to the Be Active service.

In traditional payment by results contracts, the organisation providing a public service is only paid if they achieve a certain success rate (for example organisations contracted under the Work Programme contract, a big payment by results initiative from national Government, only get paid once people have got and stayed in work for a certain length of time). Few charities, voluntary sector organisations or smaller social enterprises have the working capital to allow them to enter into such contracts, both because of cash flow constraints and because of the risk of not being fully reimbursed.

# Party Conferences 2011

In recent years, the party political conferences have been a good opportunity for the Barrow Cadbury Trust to 'speak truth to power' both directly and indirectly, by supporting grantees to attend and hold events, and by engaging directly with parliamentarians, party officials and important key individuals and organisations. The Trust was present at all three main party conferences in 2011, and a number of grantees were supported to attend. Each of the Trust's programmes was represented at conference fringe events.

## Party conference 'mood music'

The major themes of the conferences were the spending cuts and the concept of the 'localism'. In contrast to 2010, when it was noticeable that there was caution applied to the way VSOs publically articulated their views of the looming cuts and the comprehensive spending review, particularly when there were MPs or ministers present, this year civil society concerns were raised in a more direct and confrontational way.

The Liberal Democrats defended their role in the cuts with the position that the cuts would have been more severe without their influence within the coalition. The Labour Party attacked the depth of the cuts with caution, acknowledging that they would have also undertaken cuts to public services. The Conservatives were unwavering in their defence of the cuts, citing payment by results as the main mechanism for delivering 'value for money by not paying for failure'.

Last year, a large proportion of fringe events included 'big society' in their title. This year, virtually no events used this term, and the phrase was noticeably absent from ministerial speeches and presentations. Rather, the umbrella term this year was 'localism', closely aligned to 'community'. Boris Johnson spoke of the need to 'bring the village to the city'.



The T2A Conservative Party Conference fringe event in October, pictured from right to left: The Rt. Hon. Crispin Blunt MP, Parliamentary Under-Secretary of State for Justice; Sara Llewellyn, CEO Barrow Cadbury Trust; Clive Martin, Director, Clinks; Vicki Helyar-Cardwell, Director, Criminal Justice Alliance



Lord Navnit Dholakia, left, Deputy Leader of the Liberal Democrats in the House of Lords and President of Nacro, speaking at the T2A Liberal Democrat Party Conference fringe event in September;



Mike Maiden, CEO of Staffordshire and West Midlands Probation, right, reported on the success to date of the T2A project in Birmingham.

## Criminal Justice

The Trust organised and hosted a T2A event at each of the party conferences. Each event involved speakers from the T2A Alliance, a relevant Minister or senior party representative, and a representative from the T2A pilots. These were the only events at party conferences to directly address young adults in a criminal justice context. Each event was attended by between 35 and 45 attendees, with a high quality of discussion and useful access to senior parliamentarians.

## Migration

The Trust held a fringe event at the Labour party conference in partnership with Policy Network entitled 'Is the rise of anti-immigration parties inevitable in an open Europe?' with Maurice Glasman, Labour peer and political theorist, Margaret Hodge, Labour MP for Barking and Lilianne Ploumen, president for the Dutch Labour Party (PvdA). In addition, the Trust supported the Director of Article 1, which campaigns against human rights abuses in Darfur in Sudan, to attend the Conservative party conference.

## Poverty and Inclusion

The Trust partnered with Demos and the Friends Provident Foundation to host a panel event at each conference to address issues around financial inclusion. The events focussed on the challenge of the economic downturn, as well as the opportunities to engage people and communities directly in financial health, from using the Localism Bill to develop community finance and credit sources and support to exploiting social media and other technological advances.

# Criminal Justice

Aims to support people who are within or at risk of entering the criminal justice system, to improve their life chances with a focus on young adults.



## Sentencing young adults

The **Transition to Adulthood (T2A) Alliance**, which is convened by the Barrow Cadbury Trust, continues its campaign to improve services and outcomes for young adults in the criminal justice system. T2A Alliance member, the Criminal Justice Alliance, has published a new report for T2A on effective sentencing of young adults.



The report argues that the sentencing of young adults should take into account the maturity of the offender, rather than just their chronological age. It sets out the current situation with regards to the sentencing of young adults, examines the case for considering maturity as part of the sentencing process and discusses what the benefits of this approach would be. It considers how a new approach to sentencing young adults could be implemented in practice, and makes the following recommendations for change:

- A version of the German Sentencing Model for young adults, which enables young adults aged 18-20 to be sentenced under juvenile law

## New Transition to Adulthood Alliance website

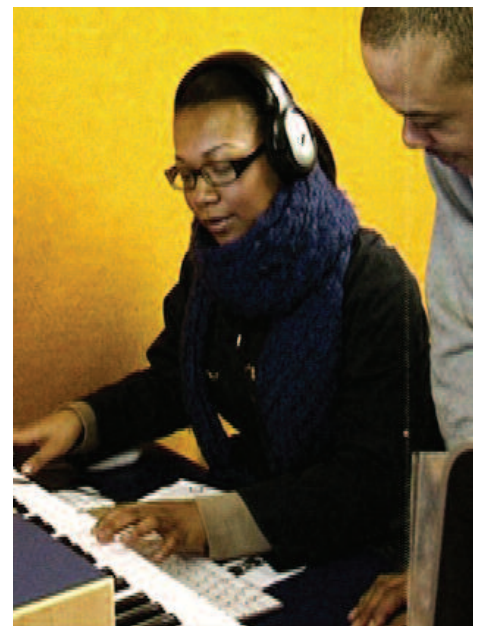


T2A has launched a new website ([www.t2a.org.uk](http://www.t2a.org.uk)), which contains all of the latest news, events, publications and evidence from the T2A Alliance campaign and projects.

where appropriate, should be piloted in England and Wales.

- Lack of maturity should be seen as a factor reflecting reduced culpability and a factor reflecting personal mitigation in the development of sentencing guidelines.
- Sentencers should receive comprehensive training on understanding maturity, and the impact of lack of maturity, to better inform their sentencing decisions.
- Service providers should work with the courts and probation to engage with sentencers and make them aware of any young adult-specific provision that is available in their area, and sentencers should understand its importance.
- Young adult-specific interventions and services need to be made available in custody and in the community, and strong links made with the courts and probation.

the findings. The Criminal Justice Alliance are undertaking a new T2A project to understand the attitudes of criminal justice professionals to the concept of maturity in the sentencing process, and the findings of this work will be published in the Autumn of 2012.



Peer-mentoring as part of the London T2A project, run by the St Giles Trust.

A parliamentary event to discuss the report was held in late October, where parliamentarians and experts debated

## New grants



Founded in 1909 by George Cadbury Jr., grandson of Cadbury's co-founder John, **Fircroft College of Adult Education** is based in his former family home, an Edwardian building set in six acres of gardens in Selly Oak, Birmingham. It was originally created to provide educational opportunities for some of the most disadvantaged and excluded members of society. One hundred years on from its establishment, its mission of 'social justice' is remains as relevant as ever. The College runs a number of short courses throughout the year, many of which are aimed at students with no or few prior formal qualifications, helping them to improve their skills and confidence, achieve personal and career goals and to reach their true potential. There is also a full time Access to Higher Education programme for students who wish to go on to University. Fircroft has a wealth of expertise in working closely with voluntary sector organisations to fulfil their purpose and mission.

From 2012, **Fircroft** will run a new programme for 'Prolific and Priority Offenders' (PPOs), those who pose their greatest threat to the safety and confidence of their community. Many in this group have drug problems and commit crimes linked to funding their drug addiction. The project is expected to meet the needs of PPOs at the point of leaving prison and is based around a 10 week residential learning programme. The first cohort is expected to start in January 2012. A grant from Barrow Cadbury Trust will go towards the evaluation of the project.

**Clinks** will lead a three part project for T2A from 2011-13, intended to extend the impact of T2A practice at the existing T2A pilot sites (in Birmingham, West Mercia and London) and new areas. The Clinks' localism team will provide intensive support to new areas that Clinks identify as willing and ready to develop a T2A approach, ensuring that it is sustainable and suited to local need.



**Young Minds** will undertake an enquiry for T2A into the relationship between mental health services and transitions for 16-24 year olds and offending behaviour. The three-part enquiry to look at the relationship between mental health services young people in the transition to adulthood, including poor transitions between children's and adult services. It will examine whether lack of poor provision exacerbates offending behaviour among young people who are in touch with the criminal justice system. Finally, recommendations will be made for systemic reform. This work will be undertaken in partnership with City University and the Centre for Mental Health, and will be completed in late 2012.



One of the clothing designs created by young people as part of the "Hoodie to Entrepreneur" project in Birmingham, run by Barrow Cadbury grantee Nationwide Learning.



Birmingham-based equalities think-tank, **Brap**, will undertake a research project aimed at enabling a better understanding of the experiences, views and needs of young people at risk of or involved in guns and gang related crime in Birmingham, providing an overview of statutory, private and voluntary sector responses to guns and gang related crime in Birmingham (and related links to West Midlands wide provision), and making recommendations for future support and research in this field. This will report in summer 2012.



# Migration and Europe

Aims to help ensure that migration is managed in a way that is equitable and socially just and that the voices of both migrants and receiving communities are heard in the public debate.

## Trust supports new organisation British Future



The Trust is pleased to announce that it has awarded a grant to **British Future**, a new social justice organisation. Sunder Katwala, the organisation's Director, said:

*"The organisation will be called British Future. Our ambition will be to inform and deepen the public conversation on issues of identity, immigration, integration and fairness. The name British Future reflects our belief that these issues present challenges for the whole of our society, about the values that we wish to uphold as a society, rather than for specific communities or for migrants alone. We will seek to contribute to a rational debate which reflects both the positive contribution of immigration, and also engages with the economic and cultural anxieties it can give rise to. We will seek to increase public involvement with these challenges in the interests of identifying workable solutions for our shared future, which are capable of securing public consent by being fair to citizens and to migrants."*

British Future is currently supported by the Barrow Cadbury Trust, the Diana, Princess of Wales Memorial Fund, the Oak Foundation, the Open Society Foundations, Trust for London and Unbound Philanthropy, and is located in the Barrow Cadbury Trust's offices. British Future will be governed by an independent expert Board of Trustees. For further information please contact: [info@britishfuture.org](mailto:info@britishfuture.org).

## Ifri's European Task Force on Irregular Migrations

The concluding reports of the **European Task Force on Irregular Migration**, led by the French Institute for International Relations (Ifri) have now been published. This initiative examined local solutions to irregular migration in the UK and four other European countries and was supported by the Barrow Cadbury Trust and Île de France.



## Women for Refugee Women

**Women for Refugee Women** has also been in the media recently, discussing its work with asylum seeking and refugee women. Highlights include this piece in Marie Claire, as well as coverage in the Observer, Guardian and on Radio 4.



## Migration Observatory

In November 2011, the **Migration Observatory** at Oxford University launched Thinking Behind the Numbers, a public opinion poll exploring the British public's attitudes towards migrants and migration. It found that respondents were most likely to think that people come to the UK to claim asylum, even though this is currently a very small percentage. The report was covered in the Telegraph, Mirror and in a Daily Mail article featuring Kalayaan, campaigners whose work with migrant domestic workers the Trust supports.





## Transatlantic Trends: Immigration 2011 survey published.

The annual '**Transatlantic Trends**' survey on immigration was launched in December. Started in 2008, the survey compares public attitudes on immigration and integration in the US, UK, Germany, France, Italy and Spain. It provides a valuable opportunity to consider British attitudes to immigration in a comparative context. This year the survey examines public attitudes to the Arab Spring and EU burden sharing. It also explores what the public think about economic migration and seeks to identify what they value most in prospective immigrants. The Key Findings report and topline data can be found on the German Marshall Fund of the United States (GMF) website <http://trends.gmfus.org/immigration/about/>. The survey is a project of the German Marshall Fund of the United States, the Barrow Cadbury Trust, Compagnia di San Paolo, with additional support from the Fundación BBVA.



All-Party Parliamentary Group on Migration

Supporting the serious debate on migration

## All-Party Parliamentary Group on Migration

Supported by the Barrow Cadbury Trust and Unbound Philanthropy, the **All-Party Parliamentary Group on Migration (APPG)** also continues to hold parliamentary events, most recently on the care sector, and also to produce briefings on key immigration issues. In November the APPG, in conjunction with the Migrants Rights' Network and Chatham House, held a high-level event on 'Global Migration: The Challenges for the West's Political Leaders'.



Cities of Migration

**Cities of Migration**, a web-based platform for best practice, is looking for outstanding examples of city leadership on immigrant integration from across the world. It recently launched a call for Good Ideas that highlight how local governments can facilitate the settlement and integration of newcomers, and promote immigrant and city success. The deadline is 30 January 2012 and full details can be found on the website <http://citiesofmigration.ca/>.

**KANLUNGAN**

Alliance of Filipino Organisations

**Kanlungan** is a registered charity consisting of five Filipino community organisations that work closely together for the welfare and interests of the Filipino community in Britain. In October, the group launched five briefings based on its research into the effect of immigration changes on senior care workers in the UK. The briefings address a broad number of issues including the role migrant senior care workers play in the UK, the impact immigration changes have had on their lives and will have on the UK care industry. Kanlungan hope that the briefings can be used by senior care workers, civil society groups, unions and MPs to raise the profile of the challenges currently being faced by senior care workers. For copies of the briefings contact Jamima Fagta at [kanlungan96\\_uk@yahoo.co.uk](mailto:kanlungan96_uk@yahoo.co.uk)

## New Grants



In September, Barrow Cadbury Trustees approved a grant to **Restore**, a project of Birmingham Churches

Together. Restore seeks to help, welcome and support asylum seekers and refugees through a range of activities and partnership work. A grant from the Trust will enable Restore to strengthen and create new partnerships to meet emerging gaps in provision for asylum seekers and refugees in Birmingham and the Black Country. In addition, the group will also identify opportunities to raise the voice of clients and civil society groups in the local and national media and act as a representative for the Birmingham asylum and refugee sector where appropriate.



policy network

The Trust is pleased to

announce its support for **Policy Network's** forthcoming project entitled: 'Immigration, populism and electoral politics.'

At a time of growing distrust in mainstream political parties, as well as rising economic insecurity, populism and populist narratives are resurgent across Europe. This research project will examine the effects of populist narratives on mainstream political parties and their electoral strategies. It seeks to explore how mainstream parties respond to the challenge of populism and debate potential progressive answers to this challenge.



At European level, the Trust recently renewed its commitment to the

**European Programme on Integration and Migration (EPIM)** and will support the next phase of this programme. EPIM is a strategic pooled fund aimed at strengthening civil society groups working on migration and integration issues in Europe.

# Poverty and Inclusion

Aims to reduce financial exclusion through changes in policy, and to help communities respond to the new ways in which public services will be provided and managed. We want our funding to try to ensure that the voice of local people, particularly those in disadvantaged areas, is heard and that communities are strengthened in this time of change.



## Habits of Solidarity Network

The **Habits of Solidarity** network consists of eight funded groups from across England. These groups are delivering innovative projects that bring communities together and address issues that include closure of local services and financial exclusion. Groups regularly come together to share learning and meet other organisations working on related issues. In September the network travelled to Belfast to meet groups in the city working to address conflict and issues of poverty in different ways. Over two days the groups met with representatives from Belfast Islamic Centre, the Northern Ireland Law Centre, Belfast Interface Network and the Community Foundation for Northern Ireland.



While there, the Habits of Solidarity group visited the famous murals in Belfast.

This was the first time many of the network members had visited Belfast. Participants and staff were struck by the cohesion challenges that still exist within the city, but also by the wealth of community activism going on to address them. An aspect of the visit groups found particularly powerful was a walking tour conducted by Coiste. Tour guides for this organisation are former political prisoners, who were able to give participants their own unique insight into the political and social history of the city – well worth looking out for if you visit Belfast! Members of the network will take learning from Belfast back to their own groups.

Several members of the network who are based in Birmingham and the Black Country have now run joint projects and share expertise outside of network meetings. An evaluation of the network is currently being conducted by the Third Sector Research Centre. For more information on the Habits of Solidarity Network please contact Clare Payne at [c.payne@barrowcadbury.org.uk](mailto:c.payne@barrowcadbury.org.uk)

## Community Organisers Schemes

The Trust is delighted that two of our grantees have been selected to be part of the national **Community Organisers Scheme**, a programme created by the Office for Civil Society in the Cabinet Office (OCS), and a key element of the Government's Big Society agenda. Birmingham Settlement is one of 11 'kickstarter' organisations chosen to pilot the national scheme, the first step of which will involve recruiting community organisers who will help create a better local society.



The **Centre for Equality and Diversity** based in Dudley will also be working on the programme to recruit and support up to five local community organisers.



Thierry Barholere (right), community development worker at the Centre for Equality and Diversity, with local Dudley residents during a community clean-up.

## Centre for Social Justice Awards

This year we were delighted to sponsor a **Centre for Social Justice award**, which are £10,000 cash prizes to voluntary and community sector groups that demonstrate innovation and effectiveness in addressing the causes and consequences of poverty. Our award went to Made of Money, a Quaker Social Action project that supports families on low incomes to enable people to take control of their finances. Made of Money does not tell people what to do, but does give practical advice and, as importantly, helps families explore their attitudes and values around money so that they can communicate better about financial issues. To learn more and see a short film about Made of Money, visit <http://www.centreforsocialjustice.org.uk>.

## Early Intervention Task Force

**Community Links**, an innovative East London charity working both at the grassroots and national levels, knows that “building fences at the top of the cliff rather than running ambulances at the bottom” makes sense both socially and financially. Politicians and other leaders talk about the importance of early action, and there is virtually universal agreement that switching resources from acute to preventative services makes sense. However, over the years it has proved very difficult to shift resources from one to the other and in the current climate of austerity, it tends to be the preventative services that lose out.

In recognition of this, and with the support of the Trust, Community Links has set up the Early Action Taskforce (EATF) - a group of charity, business and political leaders - to help build a society that prevents social problems from arising rather than one that copes with their consequences. The EATF will be launching its preliminary findings and call for action on 23 November, and continuing its work until the middle of 2012, by which time it hopes to have created a body of evidence, and a set of solutions, that will help us to build more fences and reduce the number of ambulances. For more information, go to <http://www.community-links.org/our-national-work/early-action/>

## New grants



The **Chamberlain Forum**, a “think and do” tank in Birmingham, set up to help citizens and public services join together more effectively to create better places to live and work, conducts action research, community engagement projects and provides peer and shared learning programmes. With Barrow Cadbury Trust funding, the Chamberlain Forum will run an 18 month programme of action research and collaborative enquiry. It plans to look at how five different projects, each using a different approach, affect community strength and resilience. Findings from these projects should enable the forum to articulate how communities can create and manage change and how this can help combat poverty and exclusion. The Forum will link its work to emerging ideas and policy around localism, coproduction, social capital and assets, neighbourhood equity, and learning through dialogue.

The grant to the Chamberlain Forum complements two on-going projects, one run by the New Economics Foundation that is looking at the impact on communities in Birmingham and London of the economic squeeze, and how communities can make use of co-production models (where those using services help shape and deliver them) to improve their situation. The other related project is run by Urban Forum in Dudley, and is looking at how local communities can make use of the new rights set out in the Localism Bill. The Trust will report the findings of the three projects as they develop over the coming year.

## Policy Exchange

London-based think tank, **Policy Exchange**, is being funded by the Trust to investigate the impact of the recent recession on older workers, who can be very badly affected by loss of employment. Policy Exchange will be looking at the impact of the Work Programme and policy developments such as changes to the retirement and state pension ages, as well as developments such as the digital revolution. It will look at possible options to minimise the ‘scarring’ effect of a period of unemployment on the future prospects of older workers. The project complements the valid and more widespread concern about the bleak outlook for many younger workers, but reminds us that the lives of older, as well as younger, people can be permanently affected by inability to find work.

New grants contd.

## Operation Black Vote

**Operation Black Vote** is an organisation dedicated to enabling the African British and Asian British communities to actively engage in political life. It seeks to inspire these communities to engage with our public institutions in order to address the persistent race inequalities in areas such as education, health and employment, and the persistent underrepresentation of minority communities in the political sphere. Its work spans a number of areas including voter registration, lobbying politicians, mentoring schemes and political leadership programmes with all the major parties.

With Trust funding, Operation Black Vote will establish a West Midlands Civic Leadership Programme. The training will offer an opportunity for interested individuals to become involved as political leaders, magistrates or school governors. The project will start in early 2012. For more information, go to <http://www.obv.org.uk/>.



The Trust is supporting involvement in social action through a grant to the **Sheila McKechnie Foundation**, to support voluntary and community organisations to raise awareness and improve equality of access to services for campaigners. A grant from the Trust has enabled the Foundation to add a West Midlands-based freelancer to support and train campaigners in the region, who will help organisations build their capacity and skills to influence policy and practice. This project is a practical way in which the Trust can add value to the 'voice projects' it supports locally, such as Operation Black Vote, Saheli Women's Group, and Women Acting in Today's Society (WAITS).



**Balsall Heath Forum** was set up to support local people build a safer, stronger and more socially responsible neighbourhood in what was, in the 1970s, an area in decline. The Forum is now a focus for voluntary activity and helps galvanise social activity and provide a voice for local people. Since it was established, the Forum has transformed the area from a disparate 'sink' area to one where people have pride in their community and work together to make it an attractive and popular place to live. The Trust's grant is intended to provide interim funding while the Forum works towards a sustainable future through becoming more closely involved in managing the local neighbourhood budget. Its intention is to create a sustainable model for engaged communities that can be replicated in other areas of Birmingham and further afield.

## Staff list

### Corporate Team

Chief Executive:  
**Sara Llewellyn**

Executive Assistant and  
Human Resources Officer:  
**Madeleine Rooke-Ley**

Corporate Affairs Manager:  
**Sharon Wellington**

Head of Finance and  
Administration:  
**Mark O'Kelly**

Finance and Administration  
Assistant:  
**Dorota Szabat** (from July 2011)

### Programme Team

Head of Programmes  
**Debbie Pippard**

Grants and Outreach Officer:  
**Marina David**

Migration and Europe  
Programme Manager:  
**Ayesha Saran**

Criminal Justice  
Programme Officer:  
**Max Rutherford**

Grants and Outreach Officer:  
**Clare Payne**

Programme Administrator:  
**Asma Aroui**

### Barrow Cadbury Trust

Kean House  
6 Kean Street  
London  
WC2B 4AS  
T +44 (0)20 7632 9060  
F +44 (0)20 7632 9061  
[www.barrowcadbury.org.uk](http://www.barrowcadbury.org.uk)

Registered in England No. 5836950  
Registered Charity Number 1115476